

HAMMERHEAD MOLE PNEUMATIC PIERCING TOOLS

EXPLODED VIEW PARTS MANUAL

MODELS

DESCRIPTION

2.50" (63 mm) CATAMOUNT™ WITH POWER PORT® REVERSE

PART NUMBER/RTM

296304187 (RTM-028)



HAMMERHEAD
TRENCHLESS EQUIPMENT

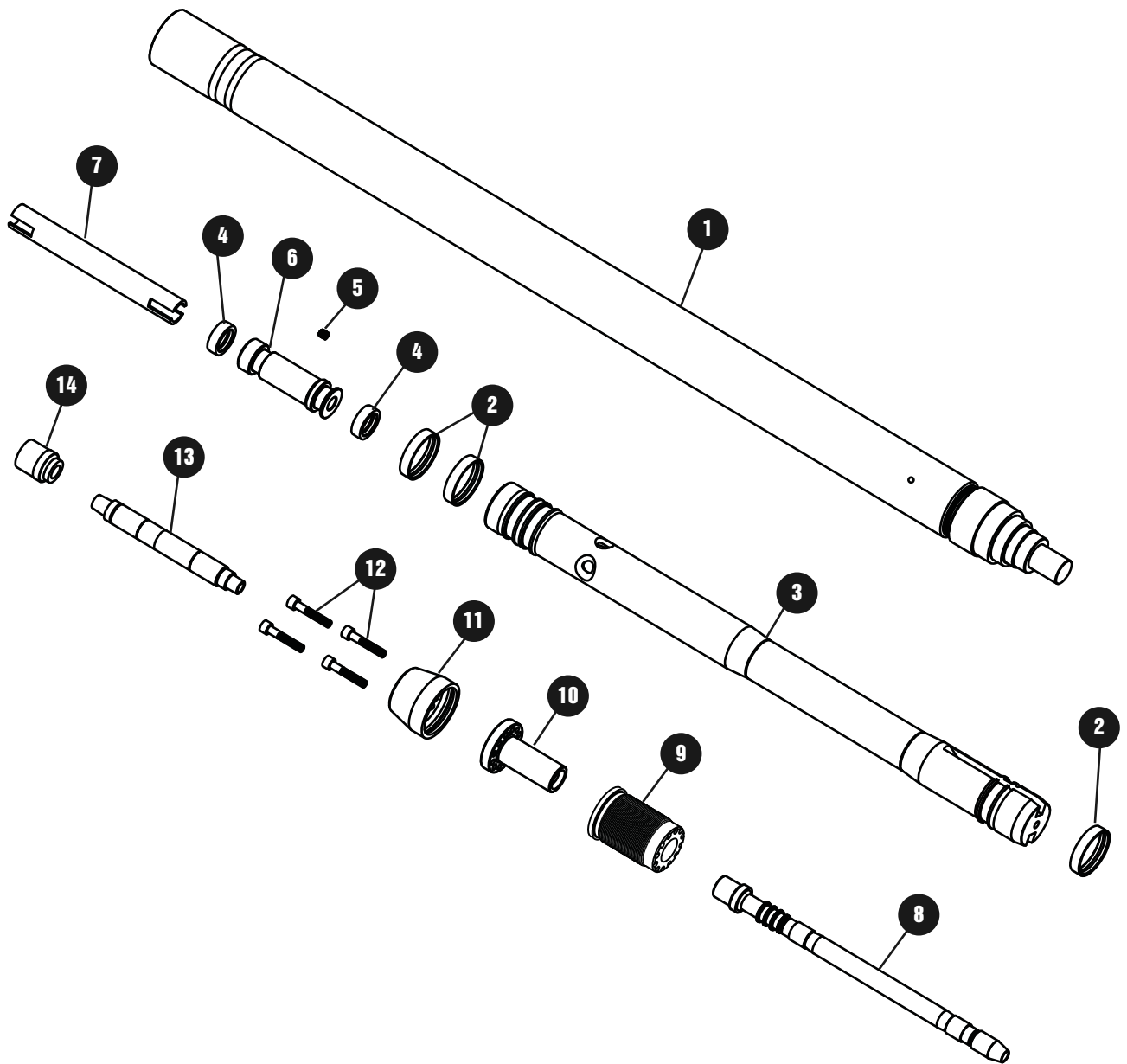
**FOR ORDERING OR PRICING INFORMATION, VISIT OUR WEBSITE
AT WWW.HAMMERHEADTRENCHLESS.COM TO LOCATE YOUR LOCAL AUTHORIZED HAMMERHEAD DEALER**

PRELIMINARY PARTS MANUAL | UPDATED 5/21/2009

2.50" (63 mm) CATAMOUNT™ WITH POWER PORT® REVERSE

EXPLODED VIEW – 296304187 (RTM-028)

FIGURE 20-1



2.50" (63 mm) CAT PP

HAMMERHEAD

For the latest in trenchless equipment and solutions,
visit our website at www.hammerheadtrenchless.com.

2.50" (63 mm) CATAMOUNT™ WITH POWER PORT® REVERSE

PARTS LIST – 296304187 (RTM-028)

| Number | Part Number | Description | Quantity | Serial Number | Remarks |
|--------|-------------|-------------------------|----------|---------------|---------------------|
| 1 | 296331712 | Body Assembly with Head | 1 | | |
| 2 | 218333001 | Striker Rings | 3 | | |
| 3 | 296331704 | Striker | 1 | | |
| 4 | 296331713 | Valve Ring Kit | 1 | | 2 Rings per kit |
| 5 | 248773001 | Control Stud | 1 | | |
| 6 | 296331711 | Valve Replacement Kit | 1 | | |
| 7 | 248771001 | Control Sleeve | 1 | | |
| 8 | 248770001 | Control Stem | 1 | | |
| 9 | 248769001 | Rear Anvil | 1 | | |
| 10 | 296253175 | Isolator Halves | 2 | | Order two for 1 set |
| 11 | 248767001 | Tailcone | 1 | | |
| 12 | 296276451 | Tailbolts | 4 | | |
| 13 | 207189001 | External Whip | 1 | | |
| 14 | 207842001 | Bowes Coupling | 1 | | |
| 15 | 296783342 | Decal, HammerHead | 1 | | Not shown |
| 16 | 296304087 | Decal, Small Tool | 1 | | Not shown |

2.50" (63 mm) CAT PP

HAMMERHEAD

For ordering or pricing information,
contact your local authorized HammerHead dealer.

HOW TO USE THIS MANUAL

This manual contains illustrations and parts list of components and assemblies which make up the machine. Each page consists of the name of the assembly or component, a figure number, reference numbers, part numbers, part names, and the quantities of the parts used.

Assembly or component names help identify the illustration and parts for each figure. This name also helps locate the general area of the machine where the assembly or component can be located.

Figure numbers are used to identify each assembly or component and to group these assemblies or components into major categories.

Reference numbers shown in a column refers to the numbered parts in the illustration. This ties the part in the illustration to the part number and description in the parts list. Part numbers are used to identify individual parts or part assemblies.

Part descriptions provide the name of the part, plus additional information such as dimensional specifications and what parts are grouped together to form part assemblies, which helps you identify the part(s).

Quantities listed for each figure are only for that assembly or component and not the total used per machine unless stated so in the "Remarks" column.

Parts are listed by part number in numerical order in the back portion of the manual. After each part number is a list of references where the part is used in the manual.

This parts manual is not intended to be a complete guide for machine service or repairs. Contact your HammerHead dealer for any of your service or technical requirements.

ORDERING PARTS

Parts for repair or replacement are available through the worldwide network of authorized HammerHead dealers.

Use only authorized HammerHead parts for repair or replacement. Always give the serial number and model number of the machine for which parts are being ordered. When ordering parts for component(s), which are not manufactured by HammerHead Manufacturing, also give the serial number of that component(s). Order all parts by part number, part name, and quantity needed.

UPDATING AND REORDERING MANUALS

The parts lists, illustrations, and specifications in this manual are based on the latest information available at the time of publication. Your machine may have product improvements and options not yet contained in this manual. Please check the web site www.hammerheadtrenchless.com for any updates.

Earth Tool Company LLC reserves the right to make changes at any time without notice or obligation to you.

Your dealer will receive notice of these changes and can assist you with accurate parts identification when ordering.

A copy of this manual is supplied with each machine. Additional copies are available through your dealer. When ordering additional manuals, use the reorder number listed on the front cover and the quantity needed.

GLOSSARY OF TERMS

RH – Replaceable Head, SR – Screw Reverse, PP – Power Port, AH – Active Head, CAT – Catamount, SW – Side-walker, AR – Air Reverse



HAMMERHEAD
TRENCHLESS EQUIPMENT

**FOR ORDERING OR PRICING INFORMATION, VISIT OUR WEBSITE
AT WWW.HAMMERHEADTRENCHLESS.COM TO LOCATE YOUR LOCAL AUTHORIZED HAMMERHEAD DEALER**

Earth Tool Company LLC reserves the right to make changes in engineering, design and specifications; add improvements; or discontinue manufacture at any time without notice or obligation. HAMMERHEAD LOGO, HAMMERHEAD MOLE, POWER PORT and ACTIVE HEAD are registered trademarks and CATAMOUNT is a trademark of Earth Tool Company LLC, Oconomowoc, WI. ©2009 Earth Tool Company LLC. All Rights Reserved. PN: L308-040910K