



TECHNICAL PUBLICATIONS

Parts Manual

Bluelight LED CIPP Lining System

934-0902

Issue 1.0



Bluelight LED CIPP Lining System

For replacement copy order P/N 934-0902
Updated: 01/25/2022

Descriptions and specifications were current at the time of publication. However, The Charles Machine Works, Inc. dba HammerHead Trenchless reserves the right to make changes in engineering, design and specifications; add improvements; or discontinue manufacturing at any time without notice or obligation. This manual may not reflect the most current version of your machine. Please visit www.hammerheadtrenchless.com for the most recent and up to date version.



HammerHead® and the HammerHead® logo are registered trademarks of The Charles Machine Works, Inc., Lake Mills, WI, USA.

© 2022 The Charles Machine Works, Inc. All Rights Reserved.

INTRODUCTION

HOW TO USE THIS MANUAL

This manual contains illustrations and parts list of components and assemblies which make up various HammerHead® models. Each page consists of the name of the assembly or component, a figure number, reference numbers, part numbers, part names, and the quantities of the parts used.

Assembly or component names help identify the illustration and parts for each figure. This name also helps locate the general area of the machine where the assembly or component can be located.

Figure numbers are used to identify each assembly or component and to group these assemblies or components into major categories.

Reference numbers shown in a column refers to the numbered parts in the illustration. This ties the part in the illustration to the part number and description in the parts list. Part numbers are used to identify individual parts or part assemblies.

Part descriptions provide the name of the part, plus additional information such as dimensional specifications and what parts are grouped together to form part assemblies, which helps you identify the part(s).

Quantities listed for each figure are only for that assembly or component and not the total used per machine unless stated so in the "Remarks" column.

This parts manual is not intended to be a complete guide for machine service or repairs. Contact your HammerHead® dealer for any of your service or technical requirements.

ORDERING PARTS

Parts for repair or replacement are available through the worldwide network of authorized HammerHead® dealers. The use of aftermarket replacement parts in your HammerHead® equipment reduces performance and overall equipment life and may also void or interfere with the factory warranty.

Use only genuine HammerHead® parts from your authorized dealer for repair or replacement. Always give the serial number and model number of the machine for which parts are being ordered. When ordering parts for component(s), which are not manufactured by HammerHead® Trenchless Equipment, also give the serial number of that component(s). Order all parts by part number, part name, and quantity needed. Do not order parts by illustration reference numbers.

UPDATING AND REORDERING MANUALS

The parts lists, illustrations, and specifications in this manual are based on the latest information available at the time of publication. Your machine may have product improvements and options not yet contained in this manual. Please check the web site www.hammerheadtrenchless.com for any updates.

Charles Machine Works, Inc. reserves the right to make changes at any time without notice or obligation to you. Your dealer will receive notice of these changes and can assist you with accurate parts identification when ordering.

A copy of this manual is supplied with each machine. Additional copies are available through your dealer. When ordering additional manuals, use the reorder number listed on the front cover and the quantity needed. Electronic copies of this manual are also available on the web at www.hammerheadtrenchless.com.

OPERATIONS INSTRUCTIONS

Instructions on recommended equipment use and maintenance can be found in the Operator's Manual shipped with your equipment. Operator's Manuals are also available on the web at www.hammerheadtrenchless.com.

Thank you for buying and using Genuine HammerHead® Trenchless Equipment, parts and accessories.

Trolley

Trolley Sub-Assembly.....6

Frame.....8

Cables.....10

Cam.....12

Garage Cone.....14

Propulsion Unit

Propulsion Unit.....18

Power Unit

Cables.....22

40m 144 Drum Assembly

40m 144 Drum Assembly.....26

40m 336 Drum Assembly

40m 336 Drum Assembly.....30

50m 696 Drum Assembly

50m 696 Drum Assembly.....34

Accessories

Air Hose Assembly.....38

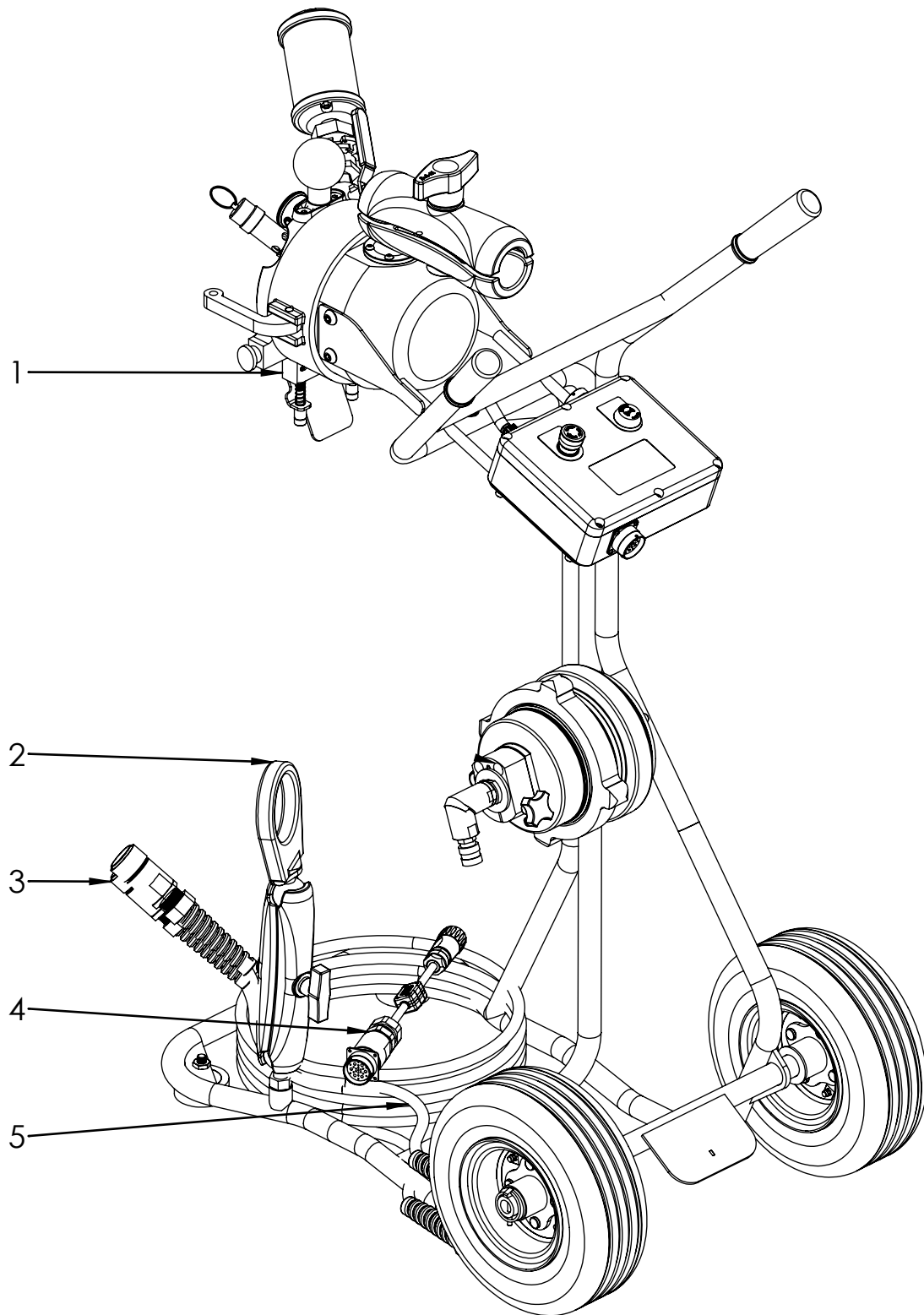
Cleaning Kit.....39

TROLLEY

934-0414

Trolley Sub-Assembly - 934-0414

Bluelight LED CIPP Lining System



Trolley Sub-Assembly - 934-0414

Bluelight LED CIPP Lining System

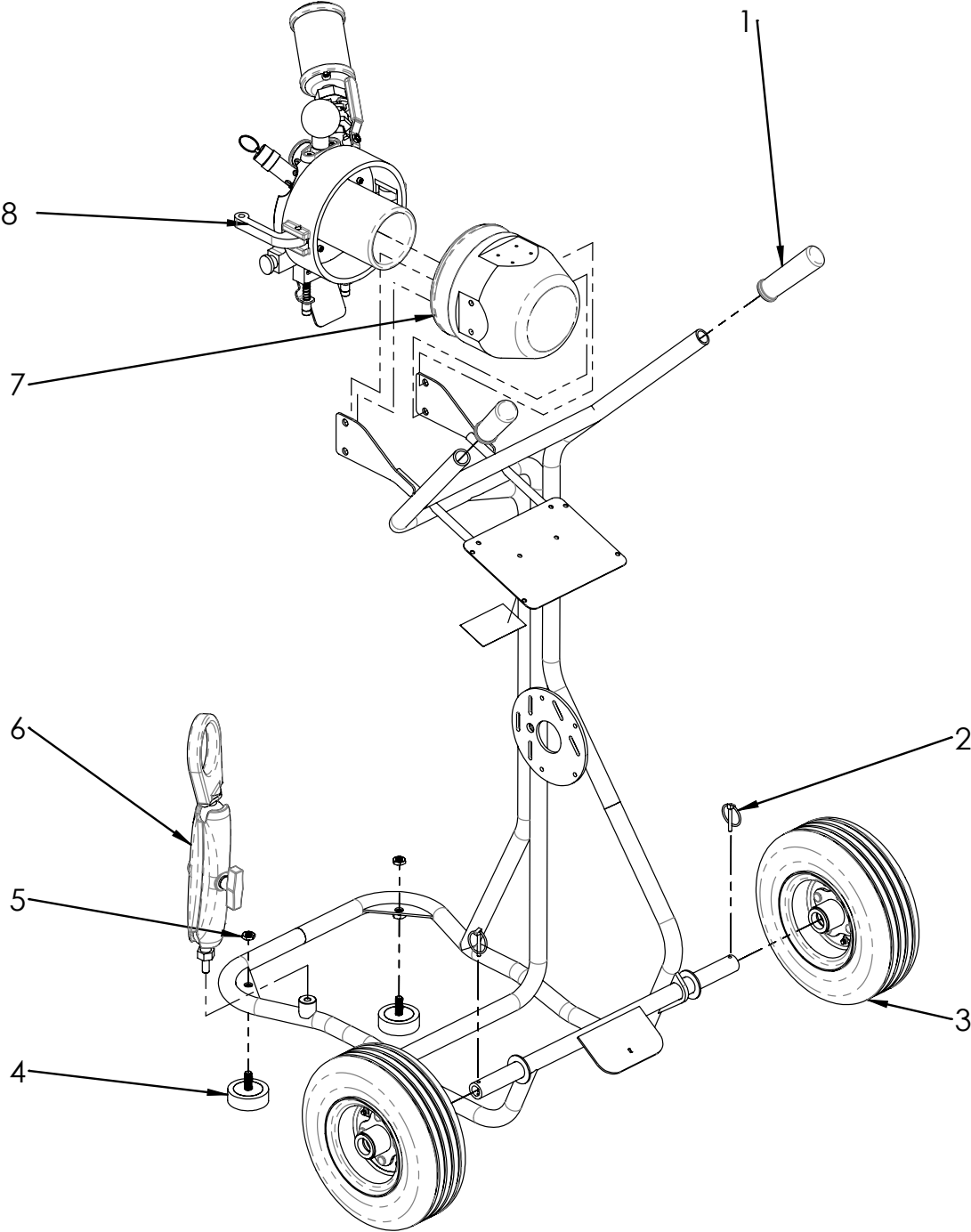
Bom ID	Part No	Description	Qty	Remarks
1	934-0278	6" CAMLOCK TERM, PROPULSION	1	
2	934-0601	ASSEMBLY, GUIDE RING	1	
3	934-0665	CABLE ASSEMBLY, 15 LF	1	
4	934-0709	CABLE ASSY, PROPULSION ADAPTER	1	
5	934-0698	CABLE ASSEMBLY, 30"	1	

Not Shown:

Footnotes:

Notes:

Frame - 934-0681
Bluelight LED CIPP Lining System



Frame - 934-0681

Bluelight LED CIPP Lining System

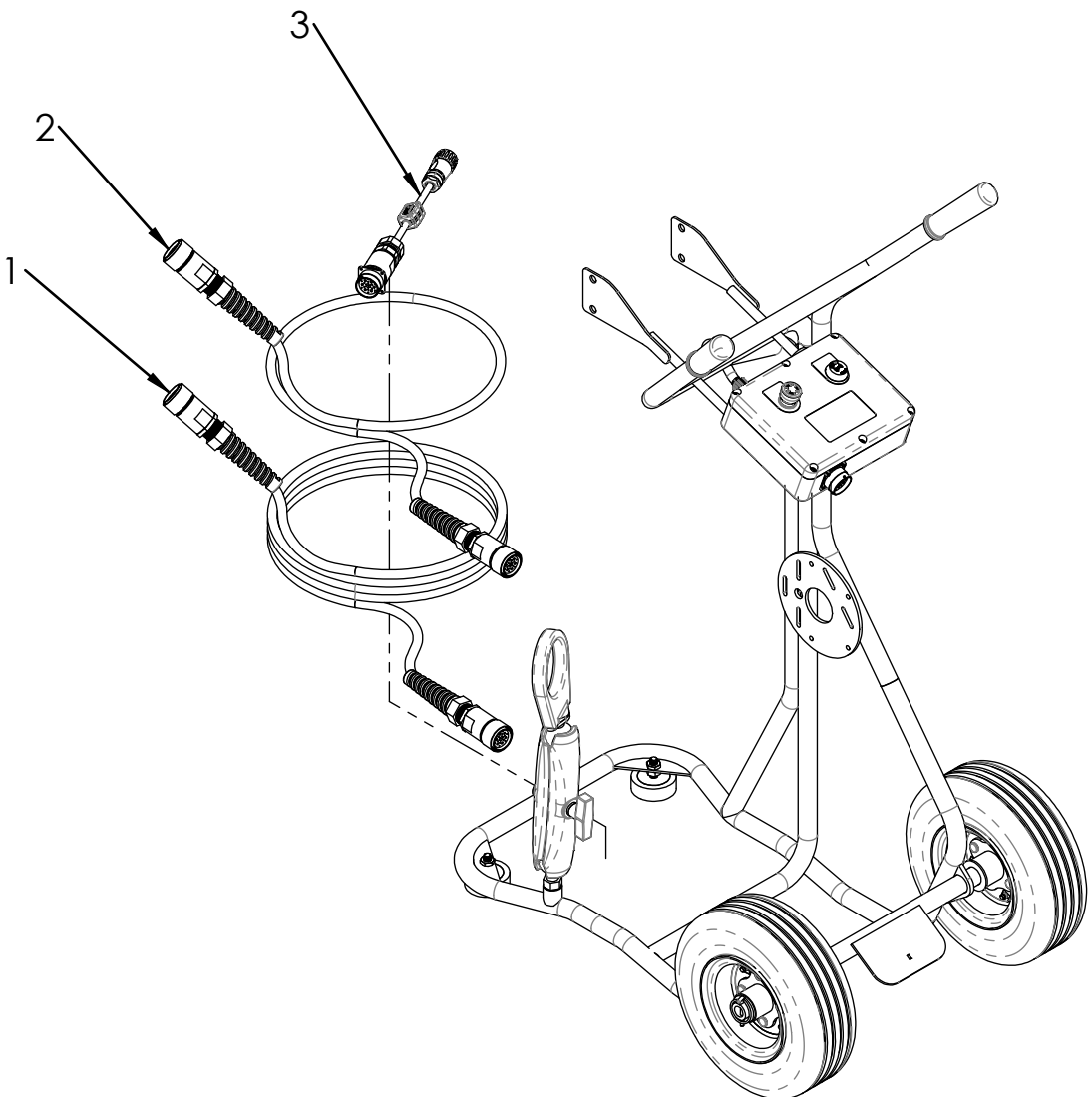
Bom ID	Part No	Description	Qty	Remarks
1	922-2171	HANDLE GRIP, 4.5"	2	SILICONE GLUE
2	934-0632	LINCH PIN, W/LOCKING RING	2	
3	922-1128	WHEEL, D-QL	2	
4	934-0628	FOOT, RUBBER, M10 X 28mm STUD	2	LOCTITE 242
5	934-0629	NUT, JAM, M10 - SS	2	LOCTITE 242
6	934-0601	ASSEMBLY, GUIDE RING	1	LOCTITE 242
7	934-0297	GARAGE CONE	1	
8	934-0278	6" CAMLOCK TERM, PROPULSION	1	

Not Shown:

Footnotes:

Notes:

Cables - 934-0681
Bluelight LED CIPP Lining System



Cables - 934-0681

Bluelight LED CIPP Lining System

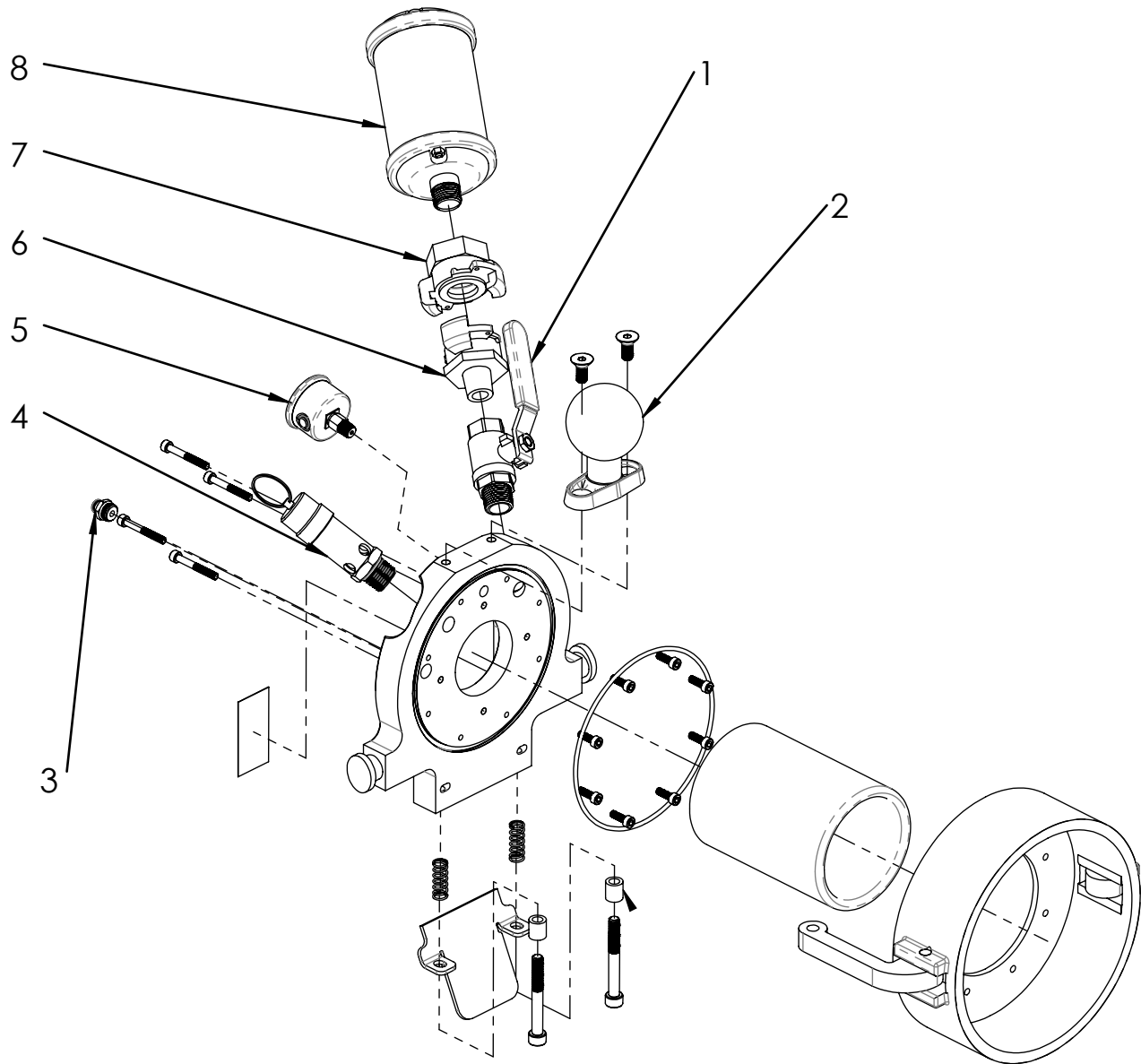
Bom ID	Part No	Description	Qty	Remarks
1	934-0665	CABLE ASSEMBLY, 15 LF	1	
2	934-0698	CABLE ASSEMBLY, 30"	1	
3	934-0709	CABLE ASSY, PROPULSION ADAPTER	1	

Not Shown:

Footnotes:

Notes:

Bluelight LED CIPP Lining System



Cam - 934-0681

Bluelight LED CIPP Lining System

Bom ID	Part No	Description	Qty	Remarks
1	922-1236	BALL VALVE, 1/2" M X F	1	LOCTITE 545
2	934-0683	RAM MOUNT D, SQUARE	1	LOCTITE 242
3	934-0271	FITTING, 1/4 MNPT X 6mm TUBE	1	
4	922-1235	VALVE, PRESSURE RELIEF, 25 PSI, 1/2 NPT	1	LOCTITE 545
5	934-0270	PRESSURE GAUGE, 0-30 PSI	1	LOCTITE 545
6	934-0269	COUPLING, 1/2" BSPP - EURO CLAW	1	LOCTITE 545
7	934-0722	COUPLING, 1/2" BSPP F- EURO CLAW	1	LOCTITE 545
8	934-0682	MUFFLER, 1/2" NPT	1	LOCTITE 545

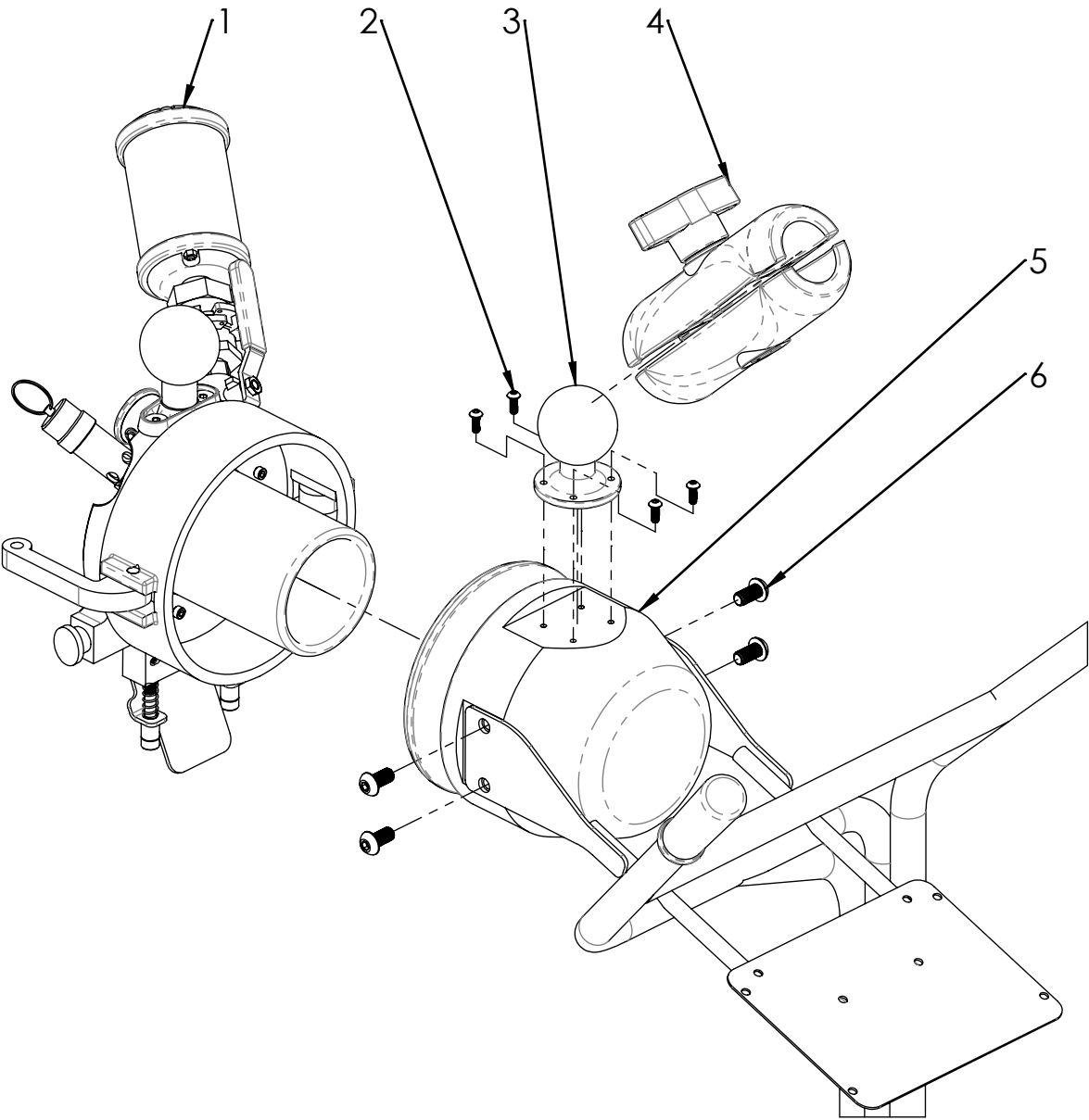
Not Shown:

Footnotes:

Notes:

Garage Cone - 934-0297

Bluelight LED CIPP Lining System



Garage Cone - 934-0297

Bluelight LED CIPP Lining System

Bom ID	Part No	Description	Qty	Remarks
1	934-0278	6" CAMLOCK TERM, PROPULSION	1	
2	934-0470	SCREW, M5-0.8mm X 14mm BHSC SS	4	LOCTITE 242
3	934-0660	RAM MOUNT D, ROUND	1	
4	934-0679	ARM, D-SIZE BALL GRIP	1	
5	934-0297	GARAGE CONE	1	
6	934-0487	SCREW, M10-1.5 X 20mm BH SS	4	LOCTITE 242

Not Shown:

Footnotes:

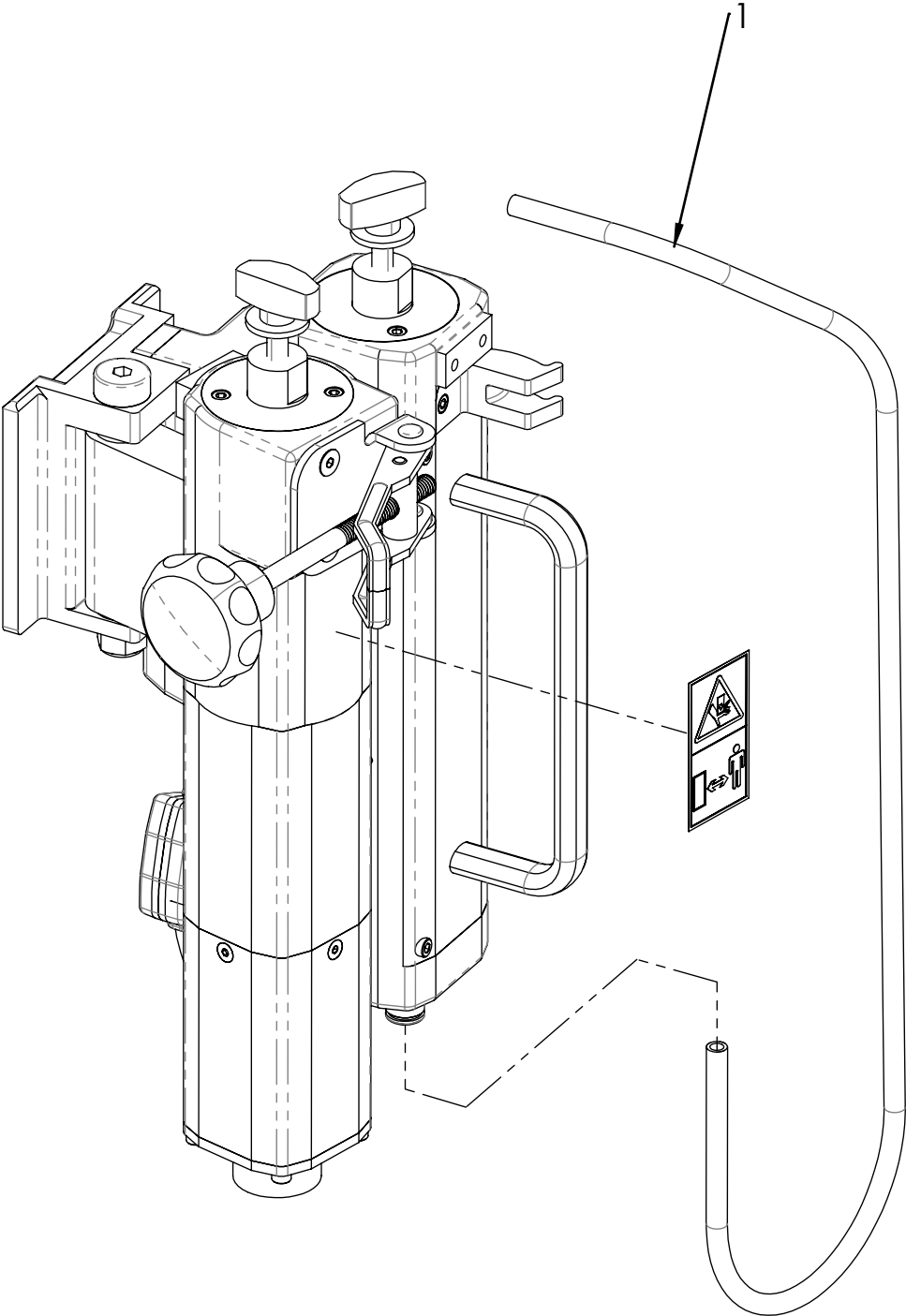
Notes:

Notes

Propulsion Unit

934-0417

Propulsion Unit - 934-0417
 Bluelight LED CIPP Lining System



Propulsion Unit - 934-0417

Bluelight LED CIPP Lining System

Bom ID	Part No	Description	Qty	Remarks
1	934-0641	TUBE, 4mm ID X 36"L - BLK	1	

Not Shown:

Footnotes:

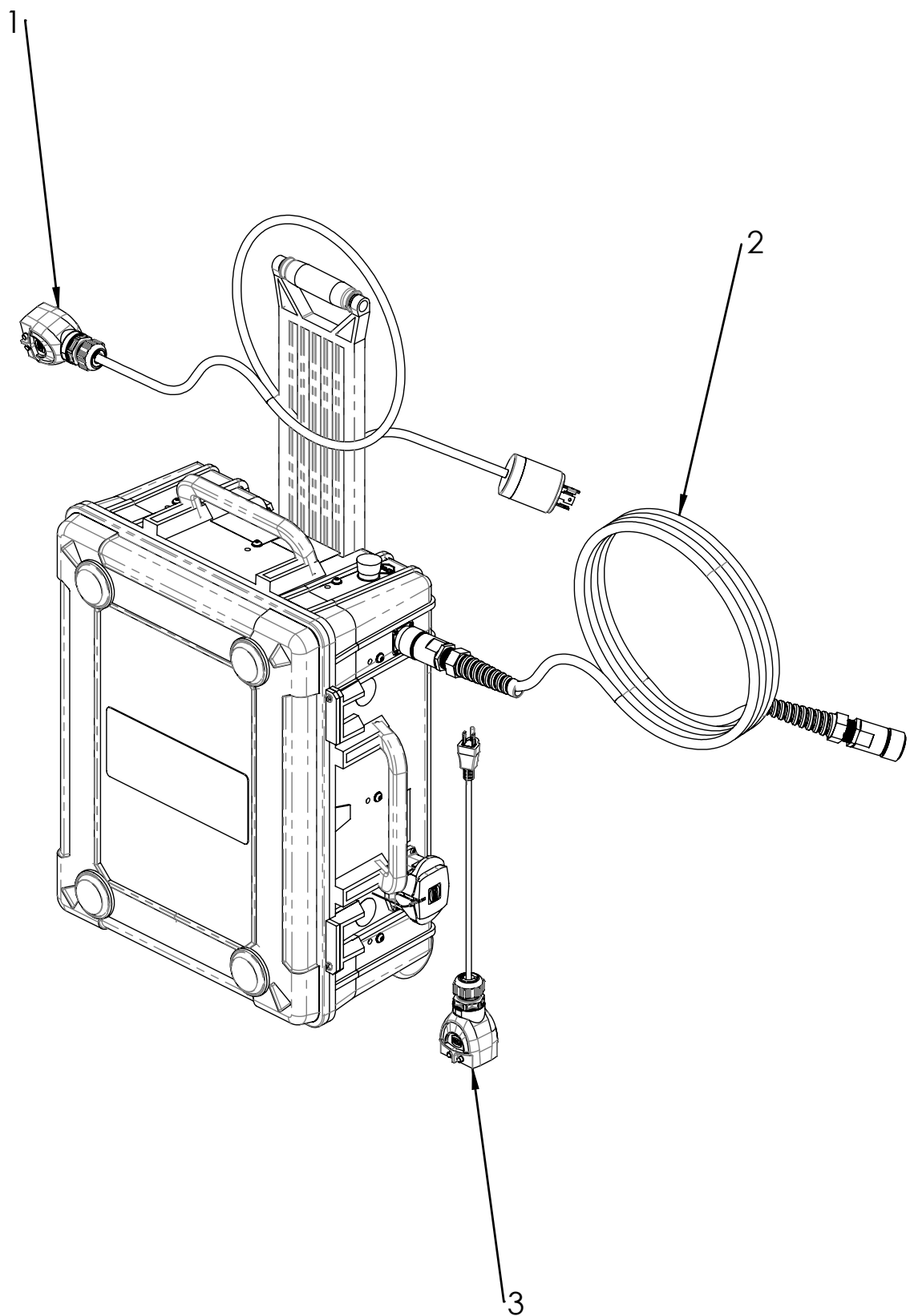
Notes:

Notes

Power Unit

934-0762

Cables - 934-0762
Bluelight LED CIPP Lining System



Cables - 934-0762

Bluelight LED CIPP Lining System

Bom ID	Part No	Description	Qty	Remarks
1	934-0758	GENERATOR CABLE ASSY - DOM	1	
2	934-0665	CABLE ASSEMBLY, 15 LF	1	
3	934-0392	POWER CABLE, 120VAC-15A	1	

Not Shown:

Footnotes:

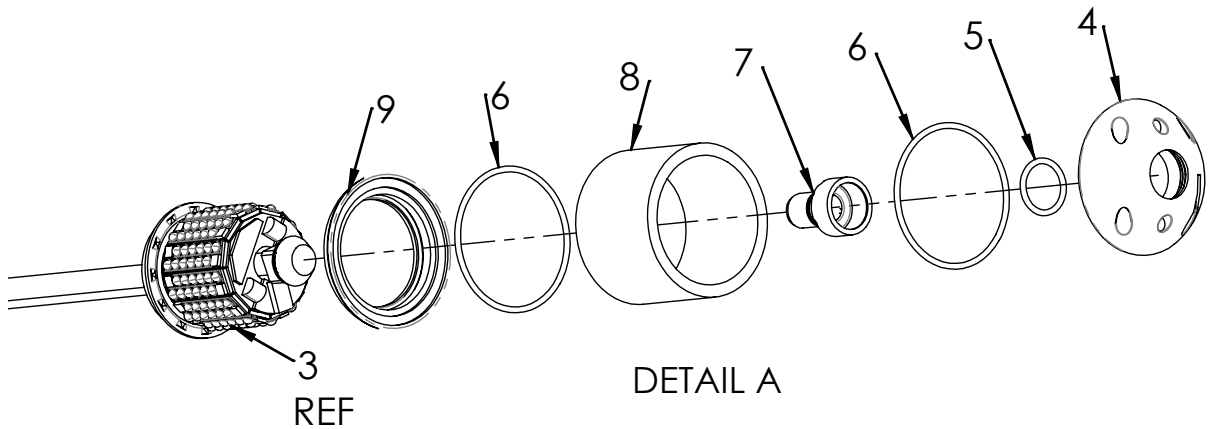
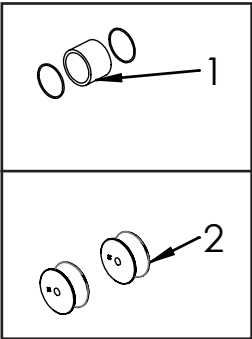
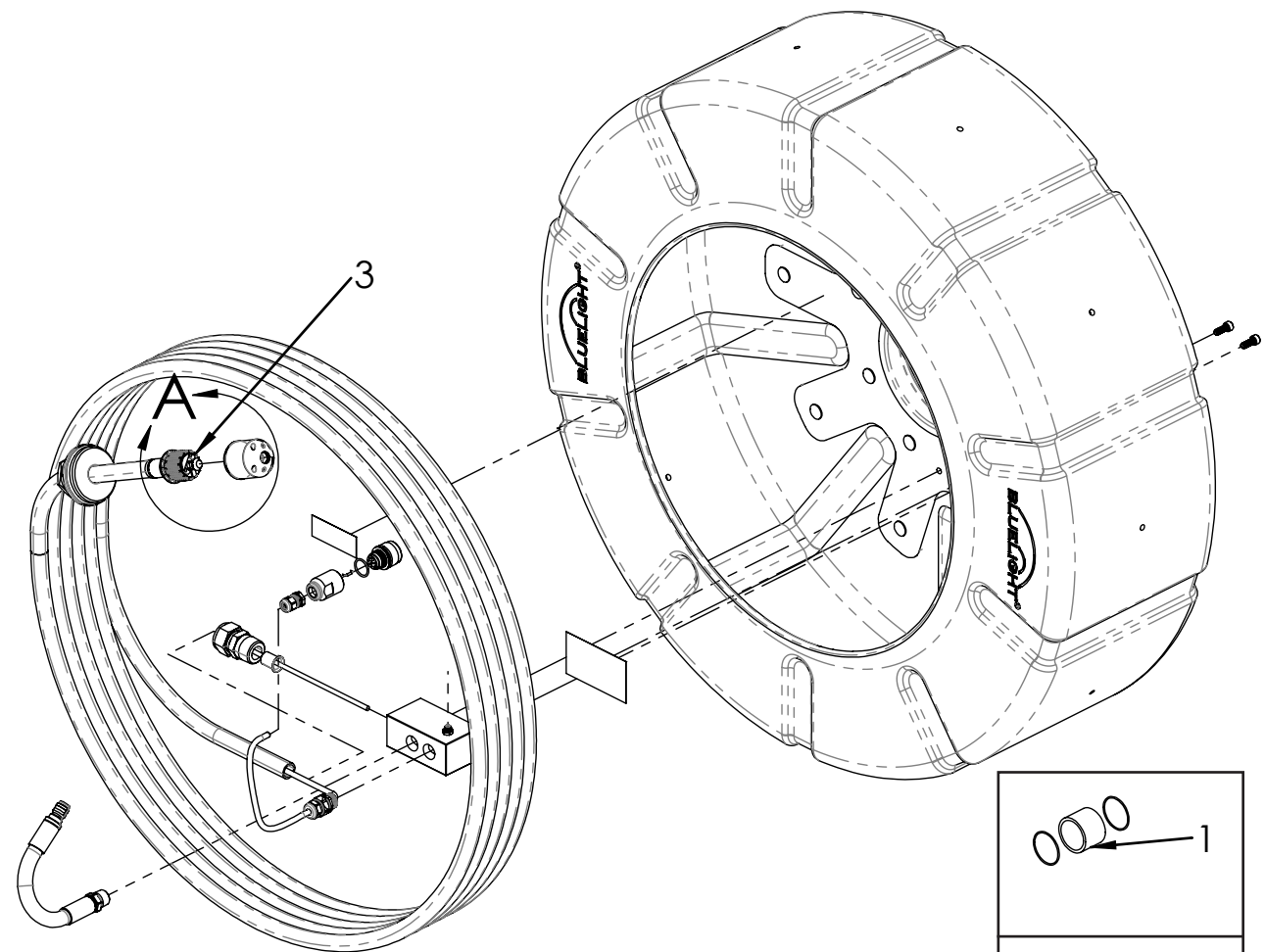
Notes:

Notes

40m 144 Drum Assembly 934-0326

40m 144 Drum Assembly - 934-0375

Bluelight LED CIPP Lining System



DETAIL A

40m 144 Drum Assembly - 934-0375

Bluelight LED CIPP Lining System

Bom ID	Part No	Description	Qty	Remarks
1	934-0817	SPARE GLASS KIT, 144 LH	1	
2	934-0213	DRIVE WHEEL, 18mm	2	
3	934-0429	40m 144 PRE-WIRED LIGHT HEAD	1	
4	934-0317	FRONT GLASS RETAINER, 144/216	1	
5	934-0306	O-RING, 12mm X 1.5mm	1	
6	934-0309	O-RING, 35mm X 1.5mm	2	
7	934-0320	CAMERA RETAINER, 144/216	1	
8	934-0432	CYLINDRICAL GLASS, 144	1	
9	934-0333	REAR GLASS RETAINER, 144	1	

Not Shown:

Footnotes:

Notes:

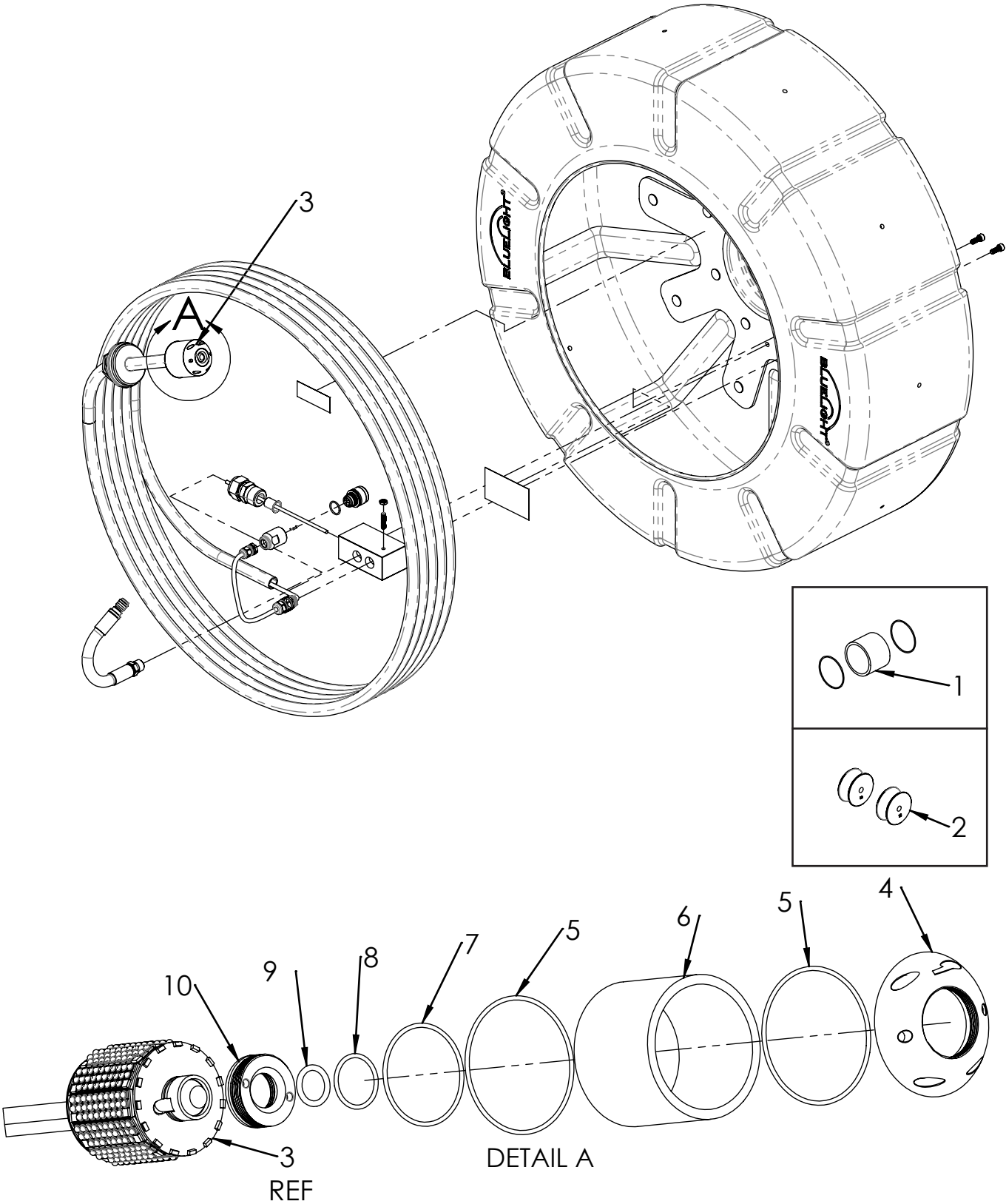
ITEMS 1 AND 2 ARE LOOSE PARTS.

Notes

**40M 336 DRUM
ASSEMBLY
934-0325**

40m 336 Drum Assembly - 934-0325

Bluelight LED CIPP Lining System



40m 336 Drum Assembly - 934-0325

Bluelight LED CIPP Lining System

Bom ID	Part No	Description	Qty	Remarks
1	934-0816	SPARE GLASS KIT, 336-2 LH	1	
2	934-0213	DRIVE WHEEL, 18mm	2	
3	934-0328	40m 336-2 PRE-WIRED LIGHT HEAD	1	
4	934-0378	FRONT GLASS RETAINER, 336-2	1	
5	934-0016	O-RING 47mm x 1.5mm	2	
6	934-0376	CYLINDRICAL GLASS, 336-2	1	
7	934-0076	O-RING 34.00mm x 1.50mm	1	
8	934-0015	O-RING 17.00mm x 1.50mm	1	
9	934-0014	O-RING 11.00mm x 2.00mm	1	
10	934-0423	CAMERA RETAINER, 336HH	1	

Not Shown:

Footnotes:

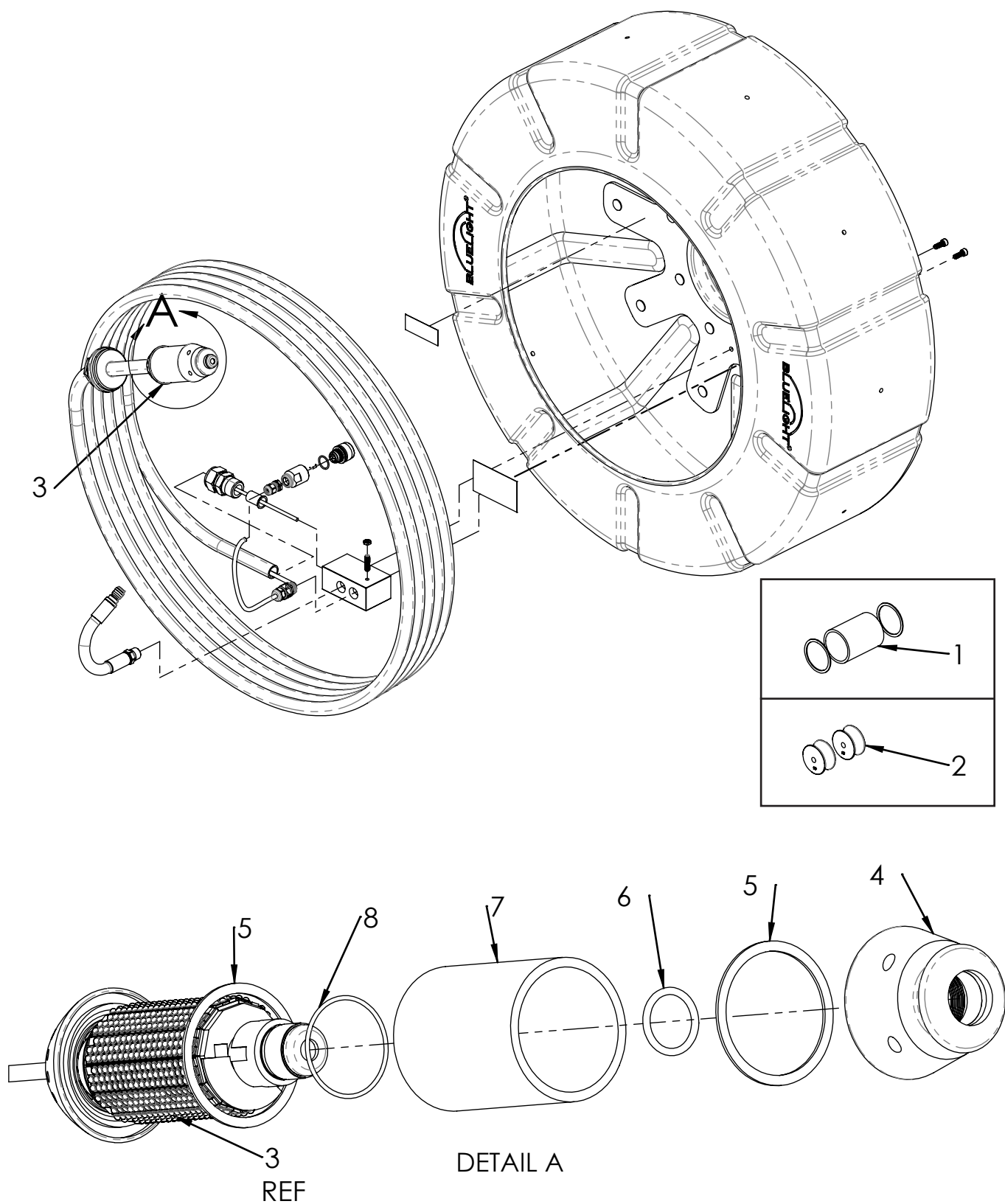
Notes:

ITEMS 1 AND 2 ARE LOOSE PARTS.

Notes

50m 696 Drum Assembly 934-0381

50m 696 Drum Assembly - 934-0381
Bluelight LED CIPP Lining System



50m 696 Drum Assembly - 934-0381

Bluelight LED CIPP Lining System

Bom ID	Part No	Description	Qty	Remarks
1	934-0212	DRIVE WHEEL, 20mm	2	
2	934-0818	SPARE GLASS KIT, 696 LH	1	
3	934-0329	50m 696 PRE-WIRED LIGHT HEAD	1	
4	934-0386	FRONT GLASS RETAINER - 696HH	1	
5	934-0295	FLAT GASKET - LIGHT HEAD	2	
6	934-0020	O-RING, 20.29mm x 2.62mm	1	
7	934-0776	CYLINDRICAL GLASS, 696 LH	1	
8	934-0076	O-RING 34.00mm x 1.50mm	1	

Not Shown:

Footnotes:

Notes:

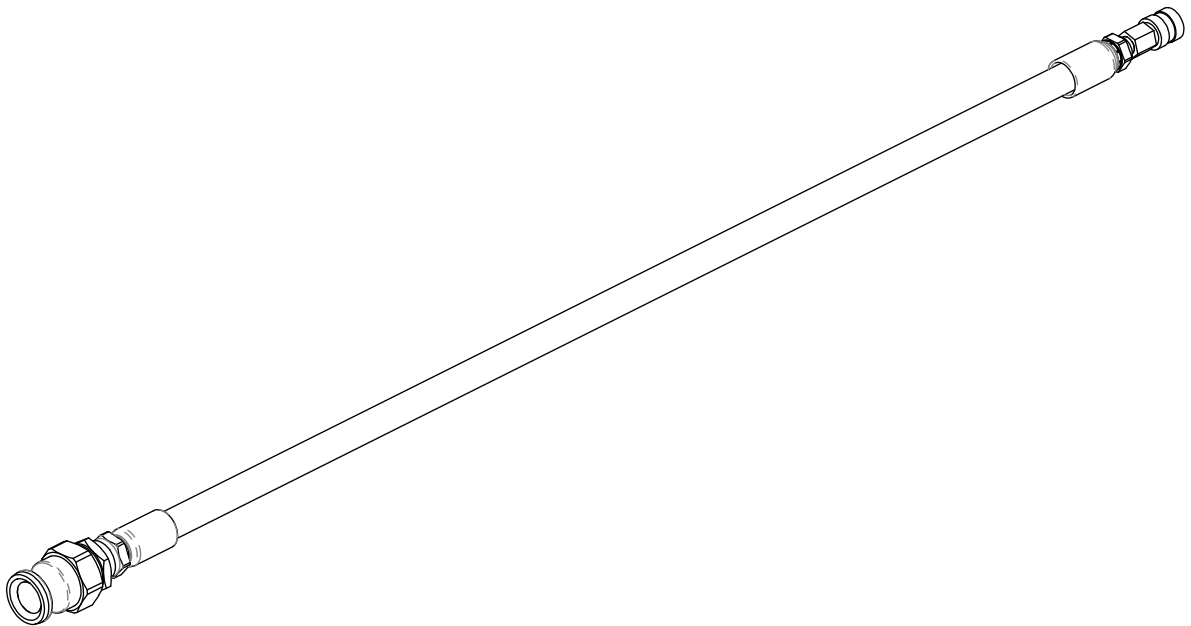
ITEMS 1 AND 2 ARE LOOSE PARTS.

Notes

Accessories

Air Hose Assembly - 934-0613

Bluelight LED CIPP Lining System



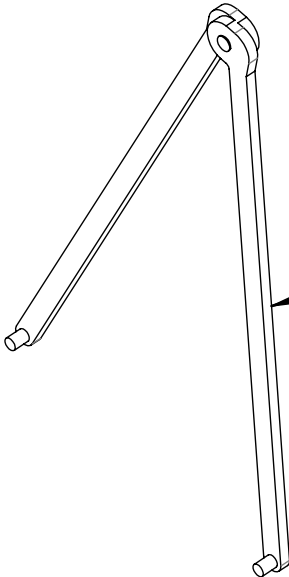
Cleaning Kit - 934-0815

Bluelight LED CIPP Lining System

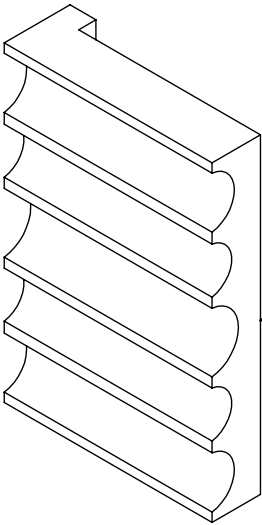
LIGHTHEAD
CLEANING
BRUSH



4mm SPANNER
WRENCH



LIGHTHEAD
CLAMP



Notes