



THE NEW STANDARD IN CURING FOR LATERAL CIPP

# BLUELIGHT™ LED CIPP



BLUeLiGHT BY  
HAMMERHEAD®

## EXCLUSIVE CIPP TECHNOLOGY FROM HAMMERHEAD® TRENCHLESS.

With more than 1 million feet in the ground around the world, the BlueLight LED system has revolutionized lateral CIPP. BlueLight LED is a Cured-In-Place Pipe (CIPP) lining system for laterals and small sewer pipes 4 to 10" in diameter. While traditional CIPP lining systems use epoxy resins cured with steam, hot water or ambient air, the BlueLight System uses specially-formulated resin that cures with LED light. The primary advantage of the BlueLight system is the speed at which it cures - up to 5 times faster than conventional curing methods. With its compact footprint and amazing speed, installers can instantly increase productivity – instead of waiting hours for a liner to cure, it'll be done in a fraction of the time allowing more jobs to be completed in a day.



### »»» SUPERIOR RESIN STABILITY

Because the resin only cures under the LED light, resin-impregnated liners are stable enough for storage and extended working times



### »»» TWO LIGHT-HEAD OPTIONS

The BlueLight curing system has two light head options and various spacers to suit unique job conditions

### »»» CUTTING EDGE SOFTWARE

The system is computer-controlled, reducing potential for human errors and ensuring a quality result

### »»» AUTOMATED QUALITY ASSURANCE

Fully automated system provides advanced QA controls and documentation

### »»» BASIC POWER REQUIREMENTS

Simply plug in the curing unit to any 110 V, 20 A outlet, a requirement typically available on private residential job sites



### »»» SMALL FOOTPRINT

Compact, lightweight equipment has a minimal space requirement for maximum portability

### »»» INTEGRATED CAMERA

Easily monitor progress and quality of installation with the camera integrated into the LED head





**BLUELIGHT BY  
HAMMERHEAD®**

**MORE THAN ONE MILLION  
FEET SUCCESSFULLY  
INSTALLED WORLDWIDE.**



# BLUELIGHT BY HAMMERHEAD®

»»» Cures as fast as 5.4' per minute (324 feet per hour)!\*

»»» Maximum distance of 328' (100m)

»»» Adds at least 50 years of service life to pipe

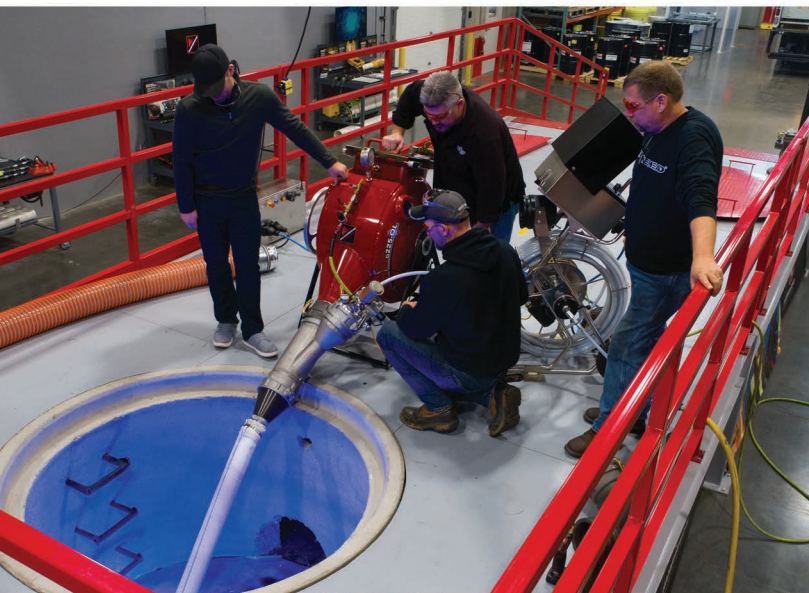
»»» For pipe diameters of 4 – 10" (100 – 250mm)

»»» Navigates bends up to 90°

»»» Meets or exceeds ASTM F1216

»»» Single diameter transition liners available

\* Curing speeds will vary based on diameter and wall thickness.



## BECOME A CERTIFIED BLUELIGHT LED CIPP INSTALLER TODAY!

HammerHead offers comprehensive training solutions from applications experts both in the field and at our state-of-the-art training facility in Lake Mills, Wisconsin. HammerHead customers have access to hands-on training from our technical staff on the proper use of our CIPP lining products including the BlueLight LED System. Our goal is to provide unmatched customer support, so we developed our curriculum to ensure installers are confident, safe and efficient on the job when using trenchless rehabilitation equipment and processes. Visit [hammerheadtrenchless.com/training](http://hammerheadtrenchless.com/training) for more information about training services.

**CALL 800.331.6653**  
**FOR A FREE PROJECT CONSULTATION TODAY.**

**HAMMERHEADTRENCHLESS.COM**  
800.331.6653 (USA ONLY) | INTERNATIONAL: +1 920.648.4848

